



# MONTHLY MEMBERSHIP PROGRESS REPORT

District 42

Results as of: 01/31/2019

GMT: MAHESH CHITNIS

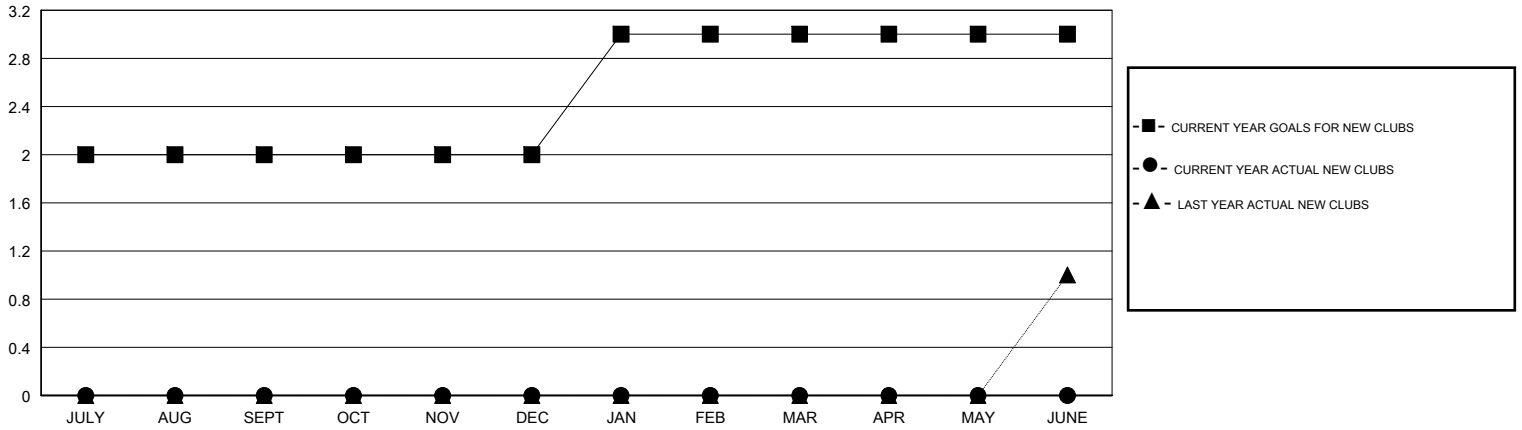
LOCATION RHODE ISLAND

GMT CA

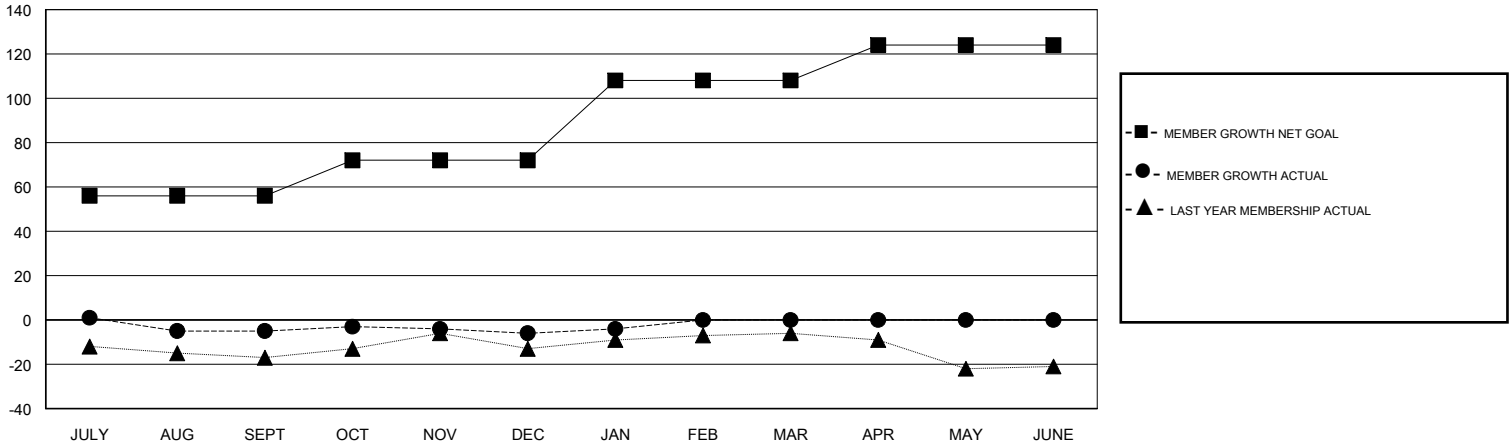
Clubs			
RESULTS FOR 2018-2019			
QUARTER	NEW CLUB GOAL	NEW CLUBS	DROPPED CLUBS
JULY/AUG/SEPT	2	0	0
OCT/NOV/DEC	0	0	0
JAN/FEB/MAR	1	0	0
APR/MAY/JUNE	0	0	0

Members			
RESULTS FOR 2018-2019			
QUARTER	MEMBER GROWTH NET GOAL	MEMBER GROWTH ACTUAL	DROPPED MEMBERS ACTUAL (including transfers)
JULY/AUG/SEPT	56	10	14
OCT/NOV/DEC	16	20	20
JAN/FEB/MAR	36	9	7
APR/MAY/JUNE	16	0	0

GOALS AND ACTUAL NEW CLUBS CUMULATIVE



GOALS AND ACTUAL MEMBERS CUMULATIVE



DROPPED CLUBS: 0	14 CLUBS OF 30 ADDED 1 OR MORE NEW MEMBERS	<u>GENDER DISTRIBUTION</u>	
DROPPED MEMBERS		MALE	807 (71.54%)
DECEASED	5	FEMALE	321 (28.46%)
CLUB CANCELLED	0	Women Percentage Fiscal Year Goal: 30%	
OTHER	36	TOTAL FAMILY UNIT MEMBERS	135
TOTAL	41	FAMILY MEMBERS PAYING HALF DUES	71

[CLICK HERE FOR CUMULATIVE MEMBERSHIP DATA](#)